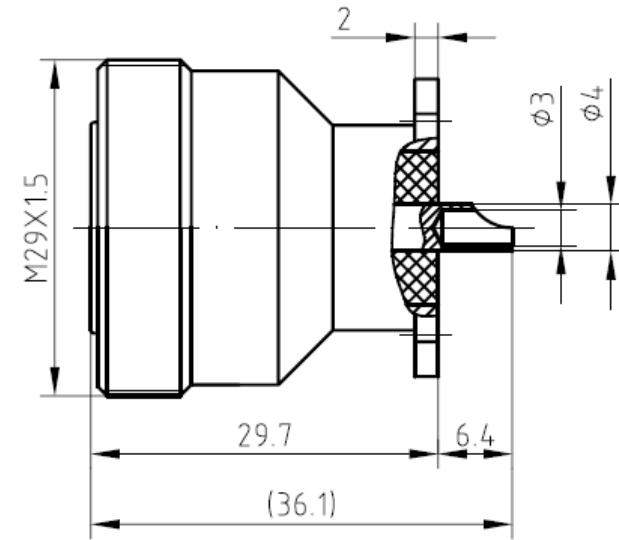
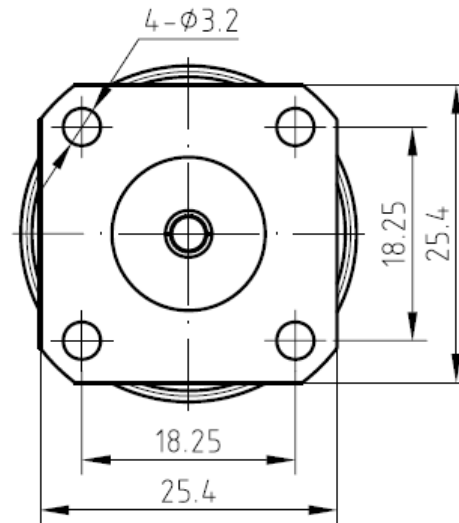


Specifications

Impedance	50 Ω
Frequency max	6 GHz
VSWR	1.35 max
Working Voltage	1500 V
Power	2KW @ 250MHz
	1KW @ 1GHz
Contact resistance	
Centre Conductor	$\leq 1\text{m}\Omega$
Outer Conductor	$\leq 0.2\text{m}\Omega$
Insulation Resistance	$> 5000\text{M}\Omega$
Operating Temperature	-40 °C to 125°C
Durability	500 Cycles

Outline Drawing



Center Conductor	Gold Plated over Phosphor Bronze
Outer Conductor	Silver Plated over Brass
Insulators	PTFE

Parts are RoHS compliant

Your No.1 European source for
RF & Microwave components

